

VPFP CPI PLUS 6 Fund of Funds

MONTHLY FEEDBACK - 31 December 2010

Portfolio Objective

The portfolio aims to generate positive returns over the short term while beating inflation by six percent over a three-year rolling period. The portfolio will be managed to achieve stable growth and will comply with the Prudential Investment Guidelines at all times.

Investable Universe of Portfolio

In order to achieve this objective, the assets normally included in the portfolio will consist of assets in liquid form and participatory interests of portfolios of collective investment schemes or other similar schemes in equity, bond, money or property markets, registered in the Republic of South Africa, or portfolios of collective investment schemes or other similar schemes operated in territories with a regulatory environment which is to the satisfaction of the manager and trustee of a sufficient standard to provide investor protection at least equivalent to that in the Republic. The portfolio will predominantly invest in multi-asset class portfolios and is not limited to certain asset classes. The manager will be permitted to invest on behalf of the portfolio in offshore investments as permitted by legislation. The portfolio will aim to achieve a minimum of 60% and a maximum of 75% in equity exposure.

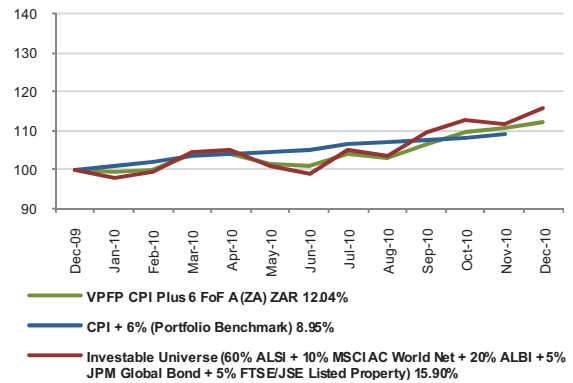
Portfolio Manager

Celtis Capital - Tom Barlow

Portfolio Comments

Global markets ended the year on a positive note, with a strong recovery in December. The MSCI AC World Index grew 7.32%. Developed Markets gained 7.35% and Emerging Markets added 7.14%. Global Bonds strengthened 1.73%. In the US, consumer spending is recovering and Q3 GDP was revised upward to 2.6%. The housing market, however, remained depressed and unemployment rose unexpectedly to 9.8%. Inflation remained subdued at 1.1%. The Fed maintained record low interest rates and quantitative easing (expected to continue into H1 of 2011). In China CPI rose again above expectations, to 5.1% (Target: 3%). The PBOC maintained its monetary policy tightening measures through increasing banks' reserve requirements by a further 50bps to 19%. Locally, the All Share Index improved 6.12%, bolstered by resources which gained 7.71%. Industrials increased 5.62% and Financials added 4.47%. The All Bond Index returned a positive 1.73%. The rand appreciated 6.7% to the US dollar on the back of dollar weakness. The Kagiso PMI Manufacturing Index grew to 52.9 points after two months below the key 50 point level, indicating expansion. CPI increased again, marginally above expectations, to 3.6%. However PPI continued its decline to 6.2%, likely to maintain CPI within the 3-6% target band and therefore back the case for continued low interest rates in 2011. The SARB commences its next meeting on 18 January 2011. We marginally increased offshore exposure in the local portfolios on rand strength. In the offshore portfolios, we further decreased global government bond exposure. We remain cautious going into the New Year on the back of uncertainty in global markets, but continue to seek opportunities of value.

Investment Performance as at 31 December 2010

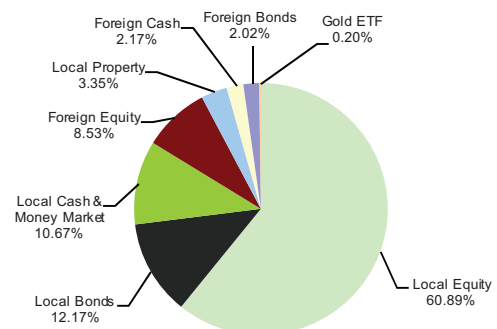


Portfolio Data

ASISA Classification	Asset Allocation - Prudential High Equity
Portfolio Benchmark	CPI +6% (after fees)
Type of Portfolio	Retail
Portfolio Size	R 279.5 million
Launch Date	12/05/2008
Inception Date	18/04/2008
Minimum Investment	Lump Sum R 10 000 Monthly R 1 000
Initial Management Fee - Class A	0.00% (incl. VAT)
Annual Management Fee - Class A	0.798% (incl. VAT)
Total Expense Ratio*	1.67%

* From 01 October 2009 to 30 September 2010

Asset Allocation as at 31 December 2010



Risk Classification

Risk	Low	Low-Mod	Mod	Mod-High	High
Term	1-3mths	3mths-1yr	1-3 yrs	3-5yrs	5+yr s

**Price History**

	30/09/2010	31/10/2010	30/11/2010	31/12/2010
NAV	98.549	101.187	102.274	103.632

Distribution to Investors (CPU) **

	31/12/2010
Dividend	0.22933
Interest	0.75267
Distribution	0.982

Distributions take place in June and December

DISCLAIMER

Collective Investment Schemes (CIS) in securities are generally medium to long term investments. The value of participatory interests may go down as well as up and past performance is not necessarily a guide to the future. CIS are traded at ruling prices and can engage in borrowing and scrip lending. The Manager may borrow up to 10% of the market value of a portfolio to bridge insufficient liquidity. Unit trust prices are calculated on a net asset value basis, which is the total value of all assets in the portfolio including any income accruals and less any permissible deductions (brokerage, UST, VAT, auditor's fees, bank charges, trustee and custodian fees and the annual management fee) from the portfolio, divided by the number of units in issue. A schedule of fees and charges and maximum commissions is available on request from RMB Unit Trusts Limited ("the Manager"). Commission and incentives may be paid and if so, would be included in the overall costs. Forward pricing is used. Fluctuations or movements in exchange rates may cause the value of underlying international investments to go up or down. A Fund of Funds Portfolio only invests in other portfolios of collective investment schemes, which levy their own charges, which could result in a higher fee structure for these portfolios. Figures quoted are from Morningstar, for the period ending **31 December 2010**, for a [lump sum / monthly investment], using NAV-NAV prices with income distributions [reinvested / excluded]. The Manager reserves the right to close certain Portfolios from time to time in order to manage them more efficiently. Different classes of participatory interests apply to certain Portfolios, which are subject to different fees and charges. The Performance Fee Frequently Asked Questions document is available on the website (www.rmbam.co.za). The TER of this class or portfolio will be higher than the quoted service charge of the manager. For the period from **01 October 2009 to 30 September 2010** each TER is the annualized percent of the average Net Asset Value of the portfolio incurred as charges, levies and fees. A higher TER ratio does not necessarily imply a poor return, nor does a low TER imply a good return. The current TER cannot be regarded as an indication of future TERs. Certain portfolios or classes include a Performance Fee in the service charge, which forms part of the TER. This report has been prepared and is made available for the benefit of RMB Asset Management clients and accredited financial advisors. The report is for information purposes only and is not to be viewed as an offer to purchase any specific product and is not to be construed as investment advice nor guidance in any form whatsoever. Investors and clients are encouraged to obtain independent professional investment and taxation advice from appropriately accredited financial advisors before investing in any of RMB Asset Management's products. All references to companies and securities are only included for the purposes of illustration. Whilst all care has been taken in the preparation of the information contained herein, no liability or responsibility will be accepted for any losses incurred as a result of acting on the contents of this report.

RMB Unit Trusts Limited's portfolios are valued daily at 15h00. Instructions must reach RMBUT before 13h00 to ensure same day value. RMB Unit Trusts Limited (Reg No.1987/004287/06) (Private Bag 9959, Sandton, 2146) trading as RMB Asset Management is the Manager of the RMB Mutual Fund Scheme, and a member of the Association of Collective Investments. The Standard Bank of South Africa Limited ((PO Box 54, Cape Town, 8000) is the Trustee of RMB Mutual Fund Scheme. RMB Unit Trusts Limited trading as RMB Asset Management is an Authorised Financial Services Provider with FSP license number 10137. Any complaints should be lodged in terms of the Complaints Resolution Policy established in terms of FAIS, a copy of this policy is available at our offices and on request.